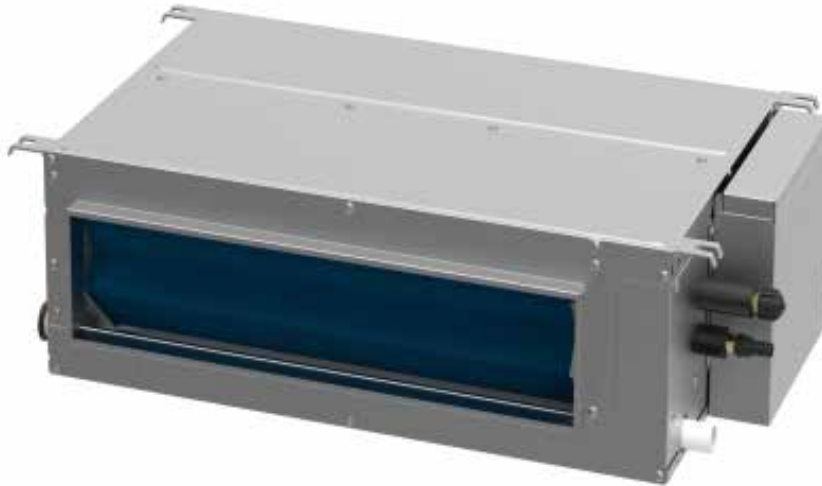


GMV-ND14PLS/B1-T(U)

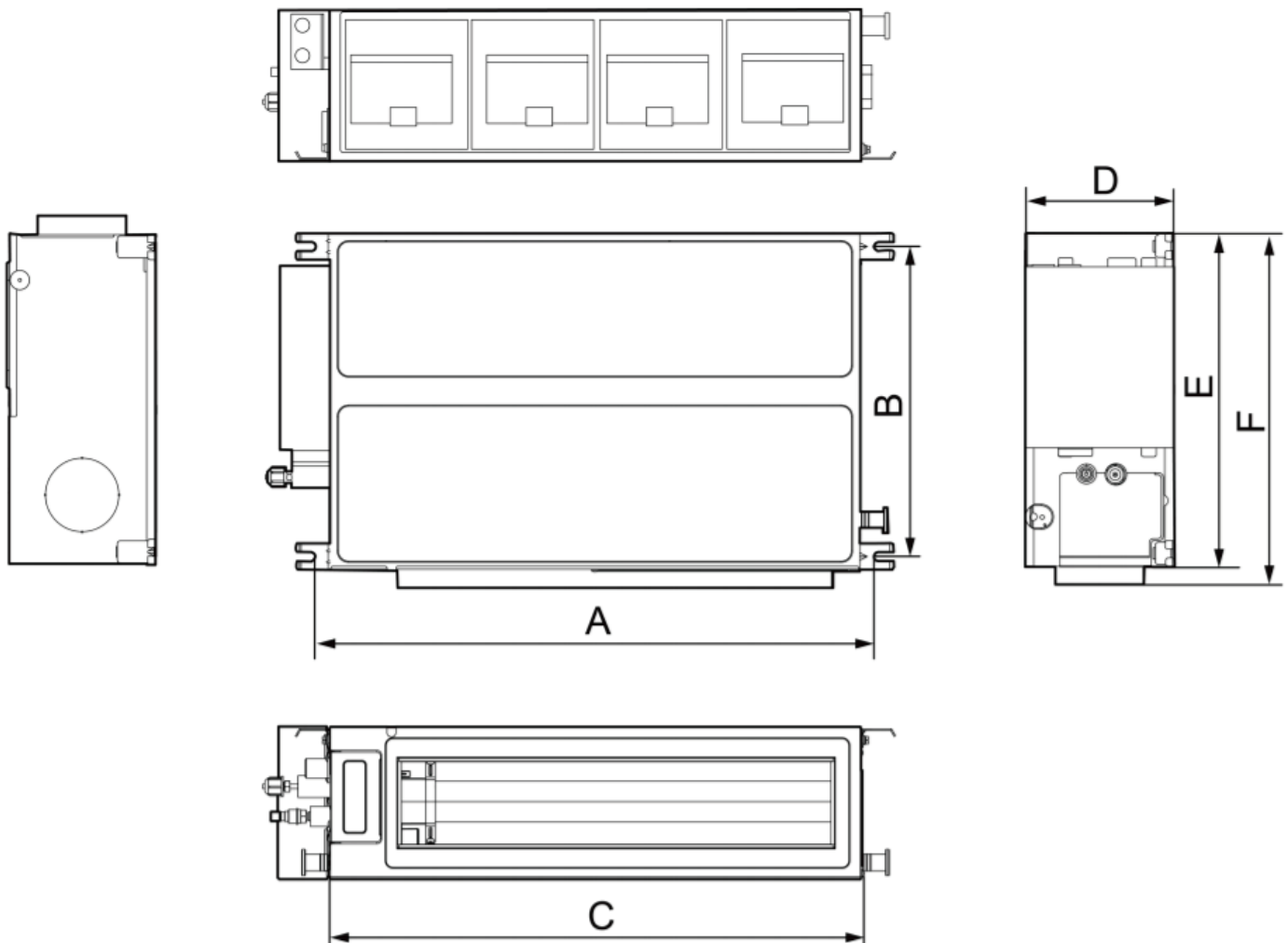
Model: GMV-ND14PLS/B1-T(U)



Specification	Unit	Parameter
Model	—	GMV-ND14PLS/B1-T(U)
Performance		
Rated cooling capacity	kBtu/h	15
Rated heating capacity	kBtu/h	17
Sound pressure level	dB (A)	27/29/33
Electric data		
Power supply	V Phase Hertz	208/230-1-60
Maximum Overcurrent Protection (MOP)	A	15
Minimum Circuit Amps(MCP)	A	1
Fan		
Air Flow Volume	CFM	235/324/441
ESP	In.W.G	0.06/0~0.12
Fan Motor Rnning Current	A	0.8
Fan Motor Power Output	W	30
Refrigerant Pipe		
Connection pipe	Gas(mm/inch)	Φ12.7/1/2
	liquid(mm/inch)	Φ6.35/1/4
Connection Method	—	Flare connection
Refrigerant	—	R410A
Dimension/Weight		
Dimension(HxWxD)	mm/inch	1010x462x200 39-6/8x18-2/8x7-7/8
Net Weight	kg/lbs	25/55.1
Other		
Safety Certification	—	ETL

Job Name:		Date:	
System Reference No.:			
Engineer Signature:			

Outline and Physical Dimensions of GMV-ND14PLS/B1-T(U).

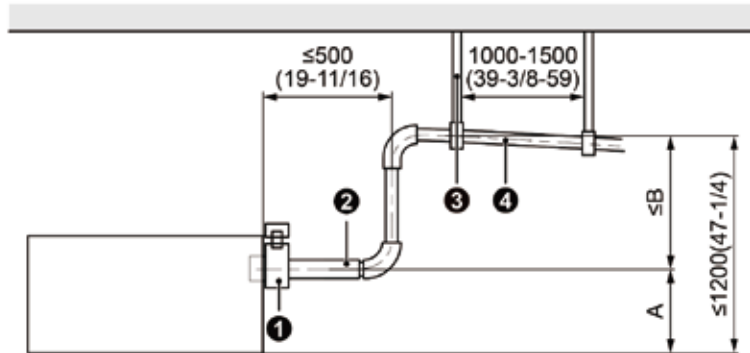


Unit: mm(inch)

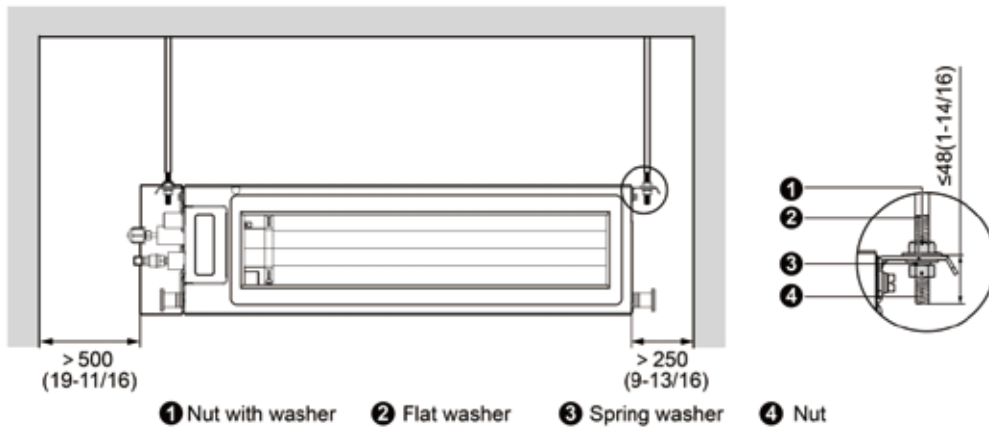
Item Model	A	B	C	D	E	F
GMV-ND14PLS/B1-T(U)	1060 (41-3/4)	415 (16-3/8)	1010 (39-12/16)	200 (7-14/16)	462 (18-3/16)	486 (19-2/16)



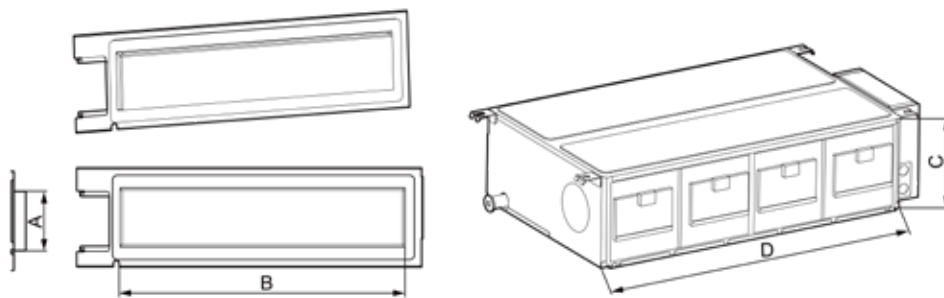
Unit: mm(in.)



- ① Metal clamp
- ② Drain hose (bending is not allowed)
- ③ Hanger bracket
- ④ Drainage pipe



- ① Nut with washer
- ② Flat washer
- ③ Spring washer
- ④ Nut



Model \ Item	Dimension of air outlet flange		Dimension of air return	
	A (mm/in.)	B (mm/in.)	C (mm/in.)	D (mm/in.)
GMV-ND14PLS/B1-T(U)	122(4-3/4)	885(34-14/16)	200(7-14/16)	1010(39-12/16)

