

460V Heat Recovery

Model:
GMV-Q72WM/B-U(U)



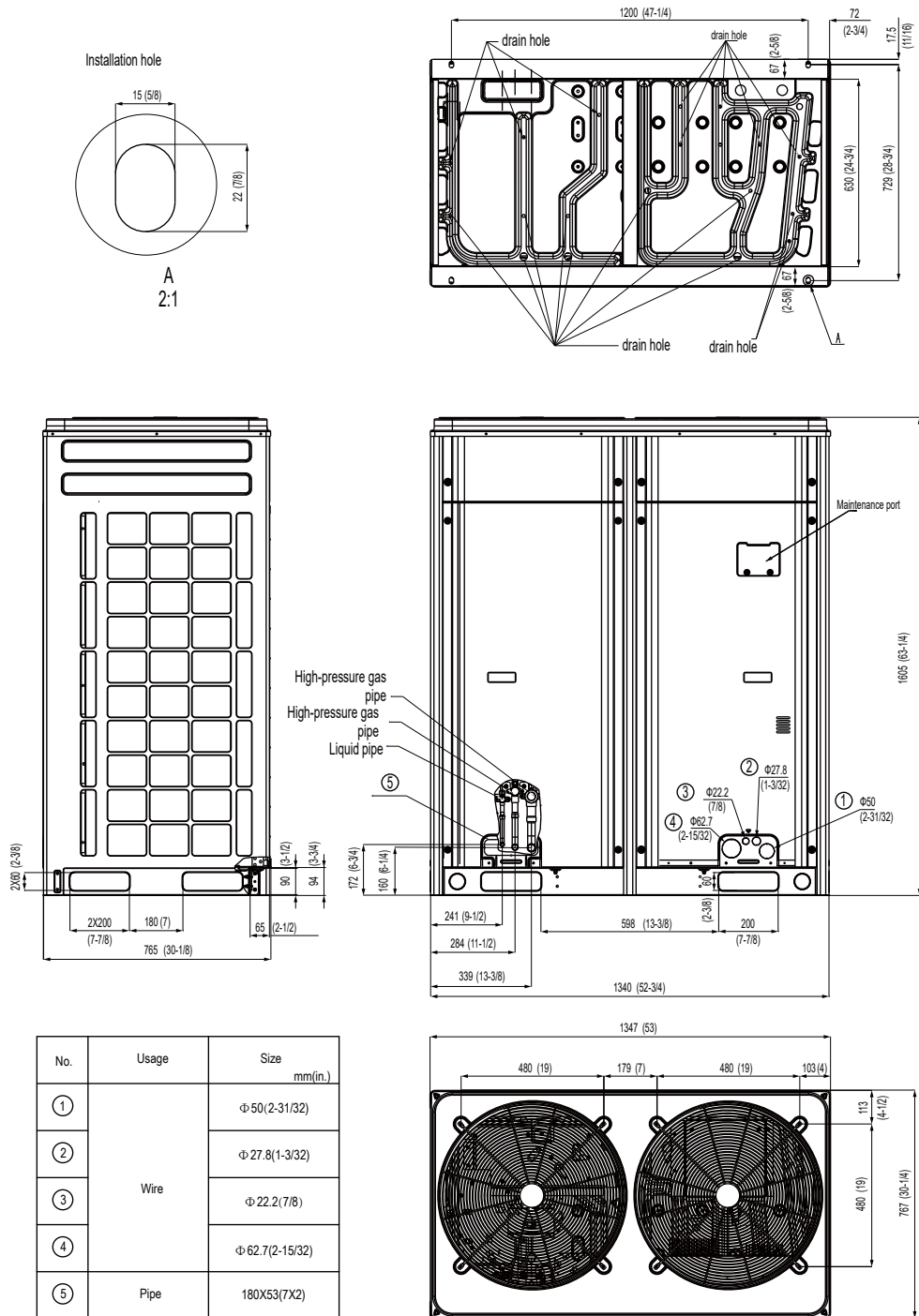
Specifications	Unit	Parameter
Model	—	GMV-Q72WM/B-U(U)
Performance		
Rated Cooling Capacity (*1)	kBtu/h	72
Rated Heating Capacity (*2)	kBtu/h	81
Power Input	Cooling(kw)	5.45
	Heating(kw)	5.8
Sound Pressure Level	dB(A)	61
Operating Temperature Range	Cooling (Outdoor) °C/°F	-5~52/23~125.6
	Heating (Outdoor) °C/°F	-20~24/-4~75
AHRI Ratings(Ducted/Non-Ducted)		
EER	(Btu/h)/W	11/11.5
IEER	(Btu/h)/W	21.5/22
COP	W/W	2.27~3.3/2.4~3.4
Electrical Data		
Power Supply	V/Ph/Hz	460/3/60
Maximum Overcurrent Protection (MOP)	A	20
Minimum Circuit Amps (MCA)	A	15
Fan		
Type x Quantity	—	Axial-flow×2
Air Flow Volume	CFM	8239
Fan Motor Power Output	W	750
Max. External Static Pressure (ESP)	Pa/In.W.G	82/0.33
Compressor		
Compressor Type x Quantity	—	Inverter Scroll×1
Compressor Refrigerant Oil Type	—	FV68H
Compressor Refrigerant Oil Charge Volume	L/Gal	5.1/1.35
Refrigerant Piping		
Connection Pipe	High Pressure Gas(mm/inch)	Φ15.9/Φ5/8
	Low Pressure Gas(mm/inch)	Φ19.05/Φ3/4
	Liquid(mm/inch)	Φ9.52/Φ3/8
Max. Equivalent Connection Pipe Length (ODU to IDU)	m/ft	165/541
Refrigerant Charge	kg/oz	9.6/338.6
Refrigerant	—	R410A
Dimension/Weight		
Dimensions (H×W×D)	mm/inch	1605×1340×765 (63-1/5×52-3/4×30-1/8)
Net Weight	kg/lbs	305/672.5
Other		
Indoor Unit	Total Capacity (%)	50%~135%
	Max Connectable Quantity	13
Certification	—	ETL/AHRI
Condenser Fin Color	—	Gold
Protection Devices	High Pressure	High pressure sensor, High pressure switch 601 psi (4.15 MPa)
	Inverter Circuit	Over-heat protection, Over-current protection
	Compressor	Discharge temp protection, Over-current protection

*1 Cooling | Indoor: 80°F (26.7°C) DB / 67°F (19°C) WB; Outdoor: 95°F (35°C) DB

*2 Heating | Indoor: 70°F (21.1°C) DB / Outdoor: 47°F (8.3°C) DB / 43°F (6°C) WB

Job Name:		Date:	
System Reference No.:			
Engineer Signature:			

Outline and Physical Dimensions of GMV-Q72WM/B-U(U).



Unit:mm(in.)

