

460V Heat Recovery

Model:
GMV-Q120WM/B-U(U)



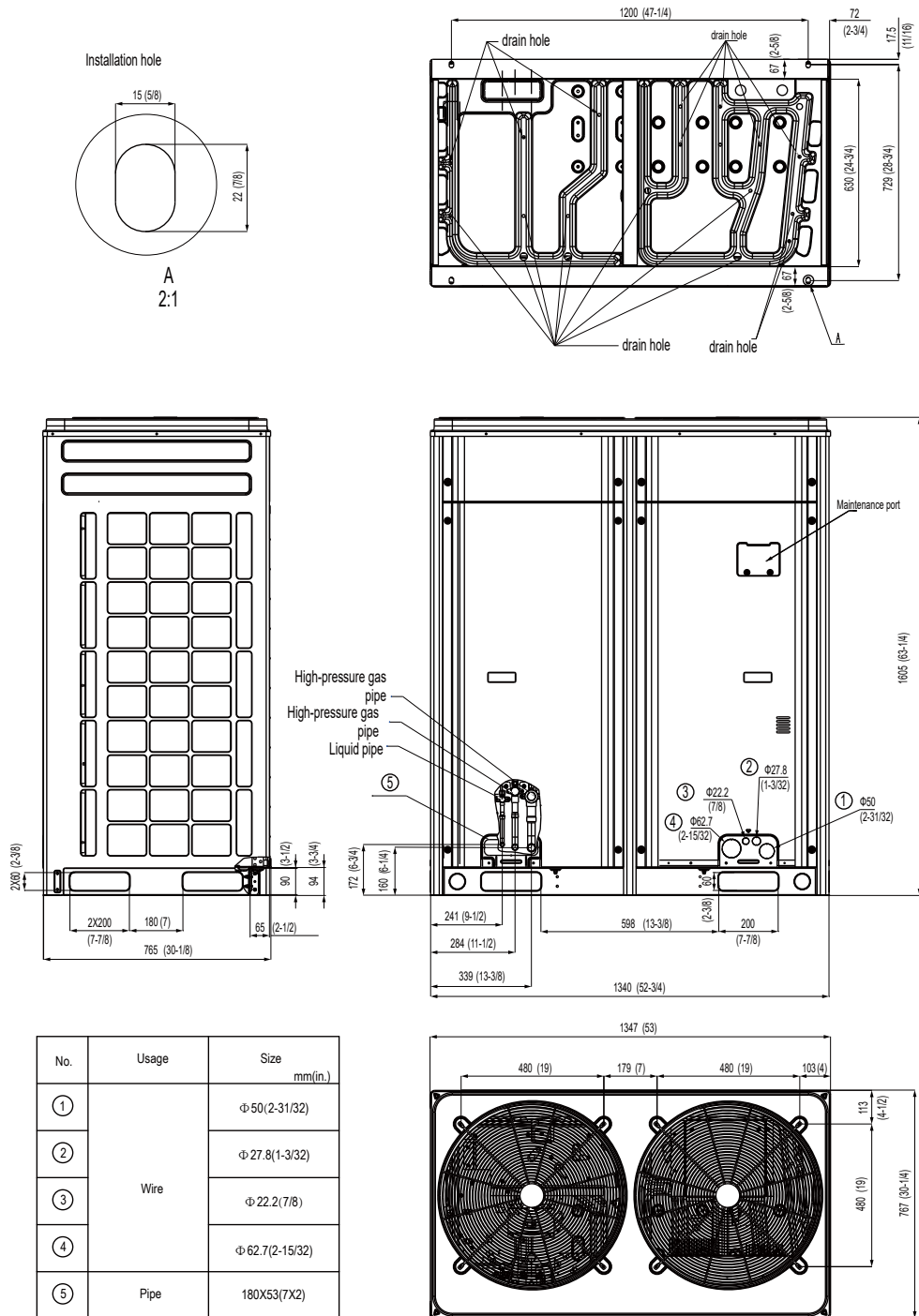
| Specifications | Unit | Parameter |
|---|----------------------------|---|
| Model | — | GMV-Q120WM/B-U(U) |
| Performance | | |
| Rated Cooling Capacity (*1) | kBtu/h | 120 |
| Rated Heating Capacity (*2) | kBtu/h | 135 |
| Power Input | Cooling(kw) | 9.58 |
| | Heating(kw) | 10.42 |
| Sound Pressure Level | dB(A) | 63 |
| Operating Temperature Range | Cooling (Outdoor) °C/°F | -5~52/23~125.6 |
| | Heating (Outdoor) °C/°F | -20~24/-4~75 |
| AHRI Ratings(Ducted/Non-Ducted) | | |
| EER | (Btu/h)/W | 11/11.5 |
| IEER | (Btu/h)/W | 22.8/22 |
| COP | W/W | 2.25~3.3/2.25~3.5 |
| Electrical Data | | |
| Power Supply | V/Ph/Hz | 460/3/60 |
| Maximum Overcurrent Protection (MOP) | A | 30 |
| Minimum Circuit Amps (MCA) | A | 25 |
| Fan | | |
| Type x Quantity | — | Axial-flow×2 |
| Air Flow Volume | CFM | 8239 |
| Fan Motor Power Output | W | 750 |
| Max. External Static Pressure (ESP) | Pa/In.W.G | 82/0.33 |
| Compressor | | |
| Compressor Type x Quantity | — | Inverter Scroll×2 |
| Compressor Refrigerant Oil Type | — | FV68H |
| Compressor Refrigerant Oil Charge Volume | L/Gal | 6.6/1.74 |
| Refrigerant Piping | | |
| Connection Pipe | High Pressure Gas(mm/inch) | Φ22.2/Φ7/8 |
| | Low Pressure Gas(mm/inch) | Φ28.6/Φ1-1/8 |
| | Liquid(mm/inch) | Φ12.7/Φ1/2 |
| Max. Equivalent Connection Pipe Length (ODU to IDU) | m/ft | 165/541 |
| Refrigerant Charge | kg/oz | 11.7/412.7 |
| Refrigerant | — | R410A |
| Dimension/Weight | | |
| Dimensions (H×W×D) | mm/inch | 1605×1340×765 (63-1/5×52-3/4×30-1/8) |
| Net Weight | kg/lbs | 370/815.8 |
| Other | | |
| Indoor Unit | Total Capacity (%) | 50%~135% |
| | Max Connectable Quantity | 19 |
| Certification | — | ETL/AHRI |
| Condenser Fin Color | — | Gold |
| Protection Devices | High Pressure | High pressure sensor, High pressure switch 601 psi (4.15 MPa) |
| | Inverter Circuit | Over-heat protection, Over-current protection |
| | Compressor | Discharge temp protection, Over-current protection |

*1 Cooling | Indoor: 80°F (26.7°C) DB / 67°F (19°C) WB; Outdoor: 95°F (35°C) DB

*2 Heating | Indoor: 70°F (21.1°C) DB / Outdoor: 47°F (8.3°C) DB / 43°F (6°C) WB

| | | | |
|-----------------------|--|-------|--|
| Job Name: | | Date: | |
| System Reference No.: | | | |
| Engineer Signature: | | | |

Outline and Physical Dimensions of GMV-Q120WM/B-U(U).



Unit:mm(in.)

