

208~230V 8 Way Cassette

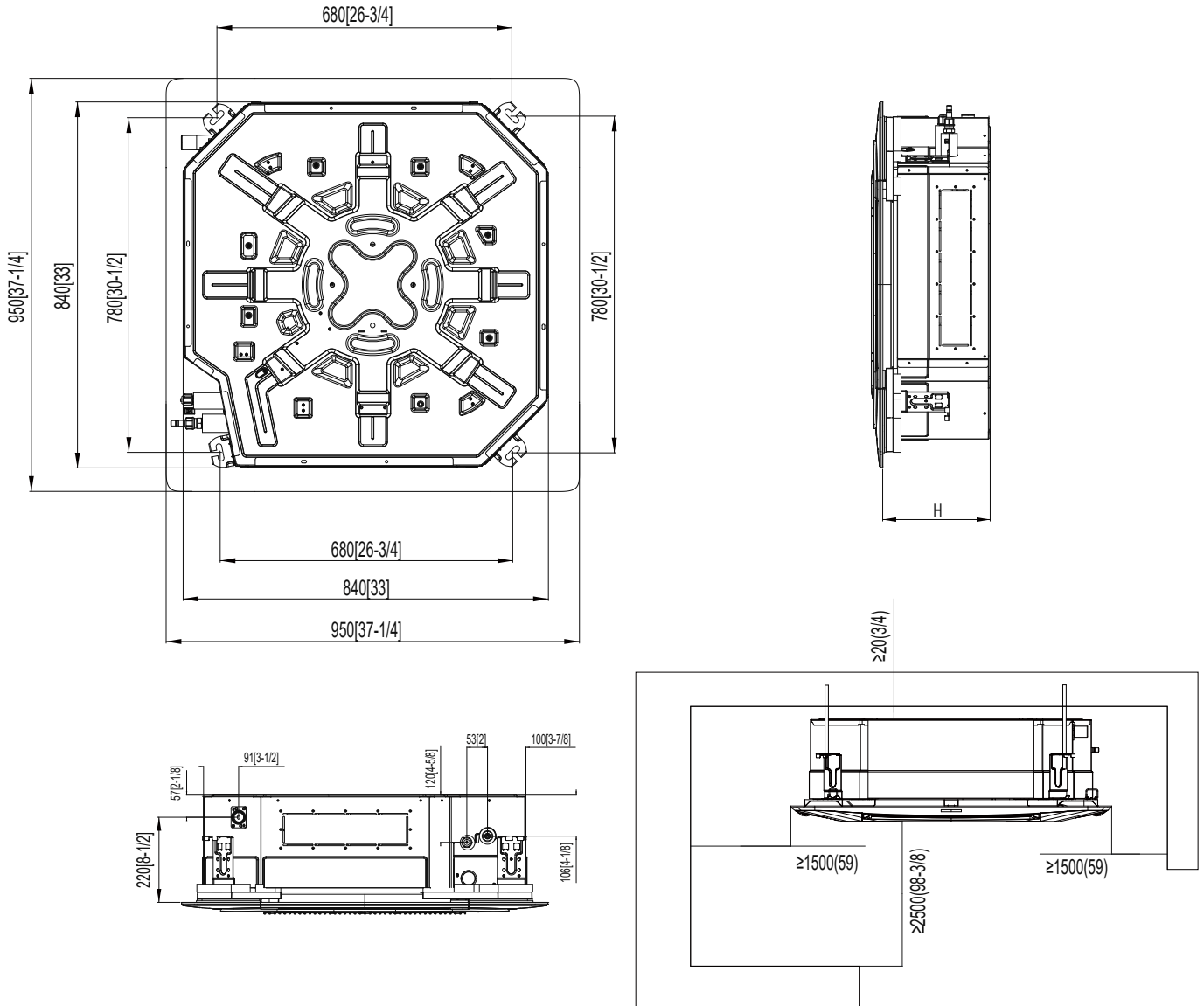
Model:GMV-ND30T/C-T(U)



| Specifications | Unit | Parameter |
|--------------------------------------|----------------------|---------------------------------------|
| Model | — | GMV-ND30T/C-T(U) |
| Performance | | |
| Rated Cooling Capacity | kBtu/h | 30 |
| Rated Heating Capacity | kBtu/h | 34 |
| Sound Pressure Level | dB(A) | 31/34/38 |
| Electrical Data | | |
| Power Supply | Voltage,Phase, Hertz | 208/230,1,60 |
| Maximum Overcurrent Protection (MOP) | A | 15 |
| Minimum Circuit Amps (MCA) | A | 2 |
| Fan | | |
| Type x Quantity | — | Centrifugal×1 |
| Air Flow Volume | CFM | 530/590/735 |
| Fan Motor Running Current | A | 0.8 |
| Fan Motor Power Output | W | 90 |
| Refrigerant Piping | | |
| Connection Pipe | Gas(mm/inch) | Φ15.9/Φ5/8 |
| | Liquid(mm/inch) | Φ9.52/Φ3/8 |
| Connection method | — | Flare Connection |
| Refrigerant | — | R410A |
| Dimension/Weight | | |
| Dimensions (H×W×D) | mm/inch | 290×840×840 (11-3/8×33-1/8×33-1/8) |
| Net Weight | kg/lbs | 33/73 |
| Other | | |
| Safety Certification | — | ETL |

| | | | |
|-----------------------|--|-------|--|
| Job Name: | | Date: | |
| System Reference No.: | | | |
| Engineer Signature: | | | |

Outline and Physical Dimensions of GMV-ND30T/C-T(U).



| model | H |
|------------------|----------|
| GMV-ND30T/C-T(U) | 330 (13) |

Unit:mm(in.)

