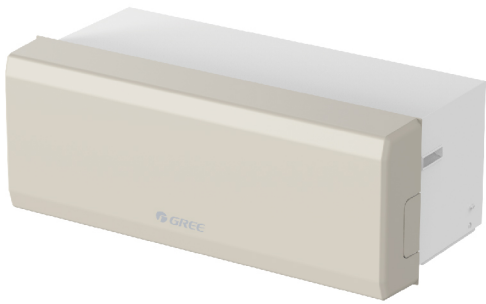


208-230V Heat Pump PTAC VRF

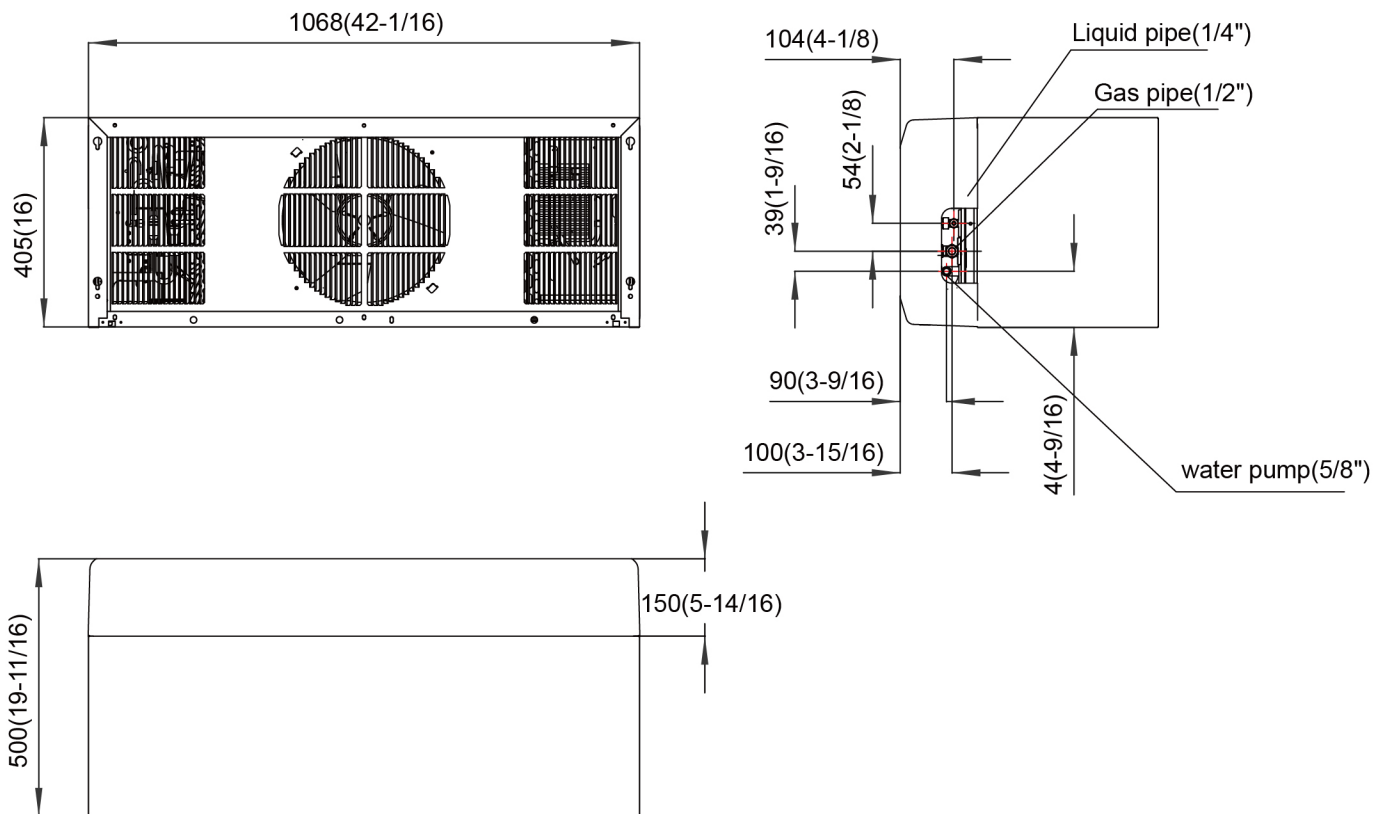
Model:
GMV-12WP/A-T(U)



| Specifications | Unit | Parameter |
|--|---------------------------|---|
| Model | — | GMV-12WP/A-T(U) |
| Performance | | |
| Rated Cooling Capacity (*1) | kw / kBtu/h | 3.52 / 12 |
| Rated Heating Capacity (*2) | kw / kBtu/h | 3.52 / 12 |
| Power Input | Cooling(kw) | 1.4 |
| | Heating(kw) | 1.1 |
| Sound Pressure Level | dB(A) | 57 |
| Operating Temperature Range | Cooling (Outdoor) °C/°F | -5~48 / 23~118.4 |
| | Heating (Outdoor) °C/°F | -20~27 / -4~80.6 |
| AHRI Ratings(Ducted/Non-Ducted) | | |
| EER | (Btu/h)/W | 8 |
| SEER | — | 15.5 |
| HSPF | — | 9.5 |
| Electrical Data | | |
| Power Supply | Voltage,Phase, Hertz | 208/230,1,60 |
| Maximum Overcurrent Protection (MOP) | A | 15 |
| Minimum Circuit Amps (MCA) | A | 13.5 |
| Fan | | |
| Type x Quantity | — | Axial-flow×1 |
| Air Flow Volume | m3/h / CFM | 850 / 500 |
| Fan Motor Power Output | W | 30 |
| Compressor | | |
| Compressor Type x Quantity | — | Inverter Rotary×1 |
| Compressor Rated Load Amps (RLA) | A | 8.5 |
| Compressor Refrigerant Oil Type | — | FV50S |
| Compressor Refrigerant Oil Charge Volume | L/Gal | 0.5 |
| Drainage Pipe | | |
| Maximum Delivery List | m/ft | 3.5 / 11.48 |
| Drainage Pipe Diameter | mm/inch | φ15.24 / φ3/5 |
| Refrigerant Piping | | |
| Connection Pipe | Gas(mm/inch) | φ12.7 / φ1/2 |
| | Liquid(mm/inch) | φ6.35 / φ1/4 |
| Max. Equivalent Connection Pipe Length (ODU to IDU) | m/ft | 30 / 98-3/8 |
| Refrigerant Charge | kg/oz | 0.8 / 28.2 |
| Refrigerant | — | R410A |
| Dimension/Weight | | |
| Dimensions (H×W×D) | mm/inch | 405×1068×500 (16×42-1/16×19-11/16) |
| Net Weight | kg/lbs | 55/121 |
| Other | | |
| Indoor Unit | Total Capacity (%) | 50%~135% of outdoor unit |
| | Max Connectable Quantity | 2 |
| Safety Certification | — | ETL/AHRI |
| Condenser Fin Color | — | Gold |
| Protection Devices | High Pressure | High pressure sensor,High pressure switch |
| | Inverter Circuit | Over-heat protection,Over-current protection |
| | Compressor | Discharge temp protection,Over-current protection |
| *1 Cooling Indoor: 80°F (26.7°C) DB / 67°F (19°C) WB; Outdoor: 95°F (35°C) DB | | |
| *2 Heating Indoor: 70°F (21.1°C) DB / Outdoor: 47°F (8.3°C) DB / 43°F (6°C) WB | | |

| | | | |
|-----------------------|--|-------|--|
| Job Name: | | Date: | |
| System Reference No.: | | | |
| Engineer Signature: | | | |

Outline and Physical Dimensions of GMV-12WP/A-T(U).



Dimension:mm(Inch)

